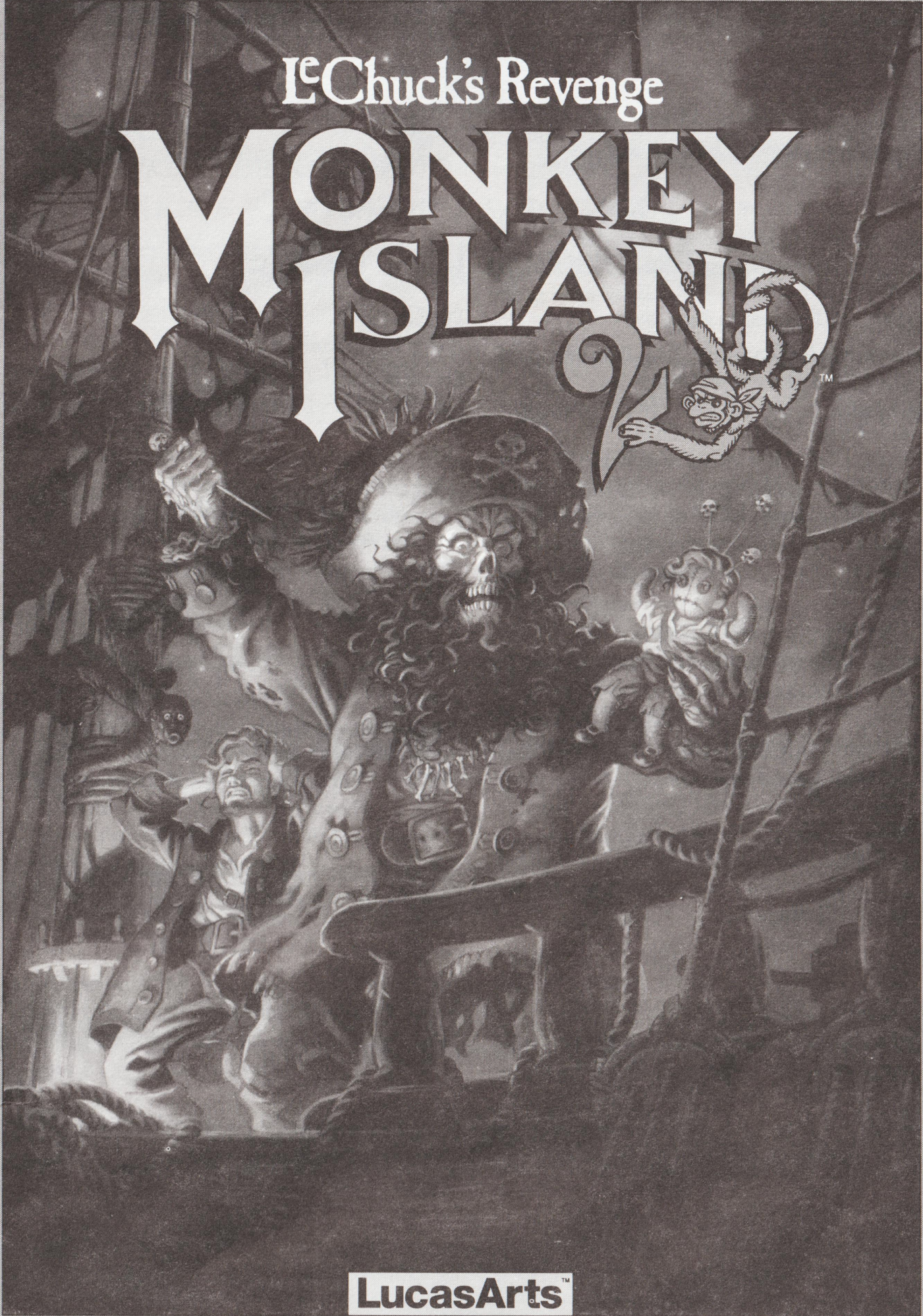


LeChuck's Revenge

MONKEY ISLAND 2



LucasArts™
Lucasfilm Games™



Lucasfilm Games™ Presents

MONKEY ISLAND 2: LECHUCK'S REVENGE™

Created and Designed by Ron Gilbert

Programmed by Tim Schafer, Tami Borowick,
Dave Grossman, and Bret Barrett

Background Art by Peter Chan, Steve Purcell,
Sean Turner, and James Dollar

Animation by Sean Turner, Larry Ahern,
Mike McLaughlin, Steve Purcell, Ken Macklin,
and Peter Chan

Original Music by Michael Z. Land,
Peter McConnell, and Clint Bajakian

Arrangements by Matt Berardo, Robin Goldstein,
Robert Marsanyi, and J. Anthony White

SCUMM Story System by Ron Gilbert,
Aric Wilmunder, Brad P. Taylor, and Vince Lee
iMUSE™ Music System by Michael Z. Land
and Peter McConnell

Lead Tester: James Purple Hampton

Testers: Jim Current, Justin Graham,
Chip Hinnenberg, Elias Mark, Kris Sontag,
and (Hollywood) Jon Van

Additional Testing by Jo Ashburn, Wayne Cline,
James "Stainless" Hanley, Kirk "Blud" Lesser,
Bret "Egg" Mogilefsky, Tabitha Tosti,
David Wessman, and Squiggy

Produced by Shelley Day
Project Led by Ron Gilbert

Lucasfilm Games General Manager: Doug Glen
Lucasfilm Games Director of Development:
Kelly Flock

Lucasfilm Games Associate Director of
Development: Lucy Bradshaw

Lucasfilm Games Director of Sales:
Cynthia Wuthmann

Product Marketing Manager: Robin Parker

Public Relations by Sue Seserman

Product Support by Khris Brown
and Gwen Musengwa

International Coordinator: Lisa Star

Associate Producer: Brenna Krupa Holden

Administrative Support by AnneMarie Barrett,

Wendy Bertram, Meredith Cahill, Alexa Eurich,
Claudia Hardin, Michele Harrell, Brenna Krupa
Holden, Marcia Keasler, Debbie Ratto, Lisa Star,
Kim Thomas, James Wood, and Dawn Yamada

Package Design by Collette Michaud

Illustrated by Steve Purcell

Manual Written by Judith Lucero

Manual Design by Mark Shepard

Print Production by Carolyn Knutson

Special thanks to George Lucas

This manual assumes that you are using a joystick or
mouse. See your reference card for keyboard equivalents.





ABOUT MONKEY ISLAND 2: LECHUCK'S REVENGE

In *Monkey Island 2: LeChuck's Revenge*, you play the role of Guybrush Threepwood. In the months since he defeated the Ghost Pirate LeChuck and rescued his one true love — Governor Elaine Marley — in *Monkey Island*, Guybrush has made his way to Scabb Island in search of the biggest treasure of them all: Big Whoop.

Here's where you come in... You direct the actions of Guybrush in his search for adventure, treasure, and the validation of his peers. Guybrush faces many obstacles in his path, not the least of which is the specter of... *LeChuck's Revenge!*

If this is your first computer adventure game, be prepared for an entertaining challenge. Be patient, even if it takes a while to figure out some of the puzzles. If you get stuck, you might need to solve another puzzle first or find and use an object. But hang in there and use your imagination... you and Guybrush *will* eventually prevail!

GETTING STARTED

To start the game on your computer, please use the computer reference card included with the game. It contains all the instructions specific to your computer.

First, complete the voodoo recipe by entering the correct proportions of its ingredients. Align the appropriate ingredients on your Mix 'n' Mojo Voodoo Ingredient Proportion Dial, then look up and enter the proportions displayed in the specified Affliction Window.

Don't lose your Mix 'n' Mojo Voodoo Ingredient Proportion Dial! Without it, you

won't be able to play the game. If you lose the Dial, you may purchase another from Lucasfilm Games. Call 1-415-721-3333 for more information.

Next, choose your game play mode. Use the instructions on-screen to decide which mode is more appealing to you.

PLAYING THE GAME

As the story opens, Guybrush is attempting to explain to Elaine Marley just how he managed to get himself into this fix. Shortly, the scene flashes back to a campfire on Scabb Island, where Guybrush is regaling his new friends with the thrilling tale of his stupendous defeat of the Ghost Pirate LeChuck. These sequences are known as a "cut-scenes" — short, animated sequences, like scenes from a movie — which can provide clues and information about the characters. Cut-scenes are also used to show special animated sequences, such as when Largo LaGrande graces Scabb Island's tavern with his phlegmatic presence. When you are viewing a cut-scene, you do not direct the action.

You begin directing Guybrush's actions as soon as he arrives on the bridge leading to Woodtick. The screen is divided into the following sections:

☞ The Animation Window is the largest part of the screen and is where the animated action takes place. Dialogue spoken by the characters, as well as game-related messages, also appears here.

☞ Available verbs are listed in the lower left-hand corner of the screen. To select a verb, position the cursor over the word and press the left mouse/joystick button or the ENTER key. The interface you use to play the game has an "auto-highlight" feature that highlights an appropriate verb when the cursor



touches an interesting or useful object on the screen. For example, when *Guybrush* is near a door that can be opened, positioning the pointer over the door will highlight the verb **Open**. Pressing the right mouse/joystick button or the TAB key will use the highlighted verb with the object, which in this case opens the door (don't worry: this feature won't give away solutions to any puzzles). Keep in mind that even though a verb is highlighted, that one verb may not be the only way to use an object. Try the other verbs as well!

↳ The Sentence Line is directly below the Animation Window. You use this line to construct sentences that tell *Guybrush* what to do. A sentence consists of a verb (action word) and one or two nouns (objects). Some examples of sentences you might construct on the Sentence Line are "Use stick with box" or "Use pins in voodoo doll". Connecting words like "on" or "with" will automatically be inserted by the program.

Nouns (objects) can be selected in two ways. You may select a noun by placing the cursor over an object in the Animation Window. Many objects in the environment, and all usable objects in the game, have names. If an object has a name, it will appear on the Sentence Line when you position the cursor over it. If no name appears for an object on the screen, you can be sure that it has no significance other than as part of the background. You may also select nouns by clicking on them in the Inventory.

↳ The Inventory icons are located to the right of the Verbs. At the beginning of the game *Guybrush's* inventory consists of an almost unlimited supply of riches. When he picks up or is given an object to use during game play, an icon for that object is added to the Inventory. There is no limit to the number of objects *Guybrush* can carry. When there are more than eight objects in the Inventory, arrows appear to the left of the icons. Click on them to scroll the icon window up or down.





To move Guybrush around, simply point the cursor where you want him to go, and click. Notice that **Walk to** is the default verb in the Sentence Line — this is because moving around is what Guybrush will be doing most often.

THINGS TO TRY IN WOODTICK

You will shortly be presented with your first opportunity to carry on meaningful dialogue with one of the colorful inhabitants of Scabb Island.

See the next section, "Talking to Characters," for more information.

Next, look at the sign next to the bridge. Place the cursor over the sign. Notice that the verb **Look at** is highlighted. Press the right mouse/joystick button or TAB key and Guybrush will walk to the sign and tell you what he sees. The experienced pirate makes a habit of stealing anything that's not nailed down: try to pick up the sign. Select the verb **Pick up** with the cursor by pressing the left mouse/joystick button or the ENTER key. Notice that the words "Pick up" appear on the Sentence Line. Position the cursor over the sign and press the left mouse/joystick button or the ENTER key. This completes the sentence "Pick up sign" on the Sentence Line. If Guybrush is not already standing by the sign, he will walk over to it and try to pick it up. An icon will be added to your inventory.

To commence your exploration of Woodtick, walk to the left edge of the screen. While there are a number of establishments in town which you will wish to investigate, let's start with the tavern: walk to the hatch found

in the lower part of the Animation Window.

Find out what you can by talking to the barkeeper: point the cursor at him and press the right mouse/joystick button or the TAB key.

Try walking through the door to the left. Here's the first of many obstacles that will be strewn in Guybrush's path... see if you can discover another way to get into that room.

TALKING TO CHARACTERS

There are plenty of characters in the game with whom you can converse. Nearly everyone Guybrush meets will have something to say, whether friendly or unfriendly...helpful, or unhelpful! Often, you can talk with someone at one point in the game, and then return to him or her later to get new information. What you learn and discover in another area may open more conversational topics with someone to whom you've previously spoken. To talk with characters, position the pointer on them and press the right mouse/joystick button or the TAB key to use the **Talk to** verb automatically.

In a conversation, you select what Guybrush says from among the possible phrases at the bottom of the screen. Just click on the phrase you want him to say. Of course, what Guybrush says will affect how other people respond. And, as conversations continue, you could be presented with a new array of dialogue choices. Don't worry — we'll never punish you for selecting the "wrong" or funny dialogue response. After all, you're playing this game to have fun!





FUNCTION KEYS

To save your progress in a game, enabling you to turn the computer off and start again later in the same place, use the save feature. Simply press the Save/Load Game function key (F5 on most computers – see your reference card for more information).

To load a game you have saved, use the Save/Load Game function key any time after *Monkey Island 2: LeChuck's Revenge* has been loaded. If necessary, the program will change game difficulty modes to match that of the game you have loaded.

To bypass a cut-scene, press the ESC key, or press both mouse/joystick buttons at once. See your computer reference card for details. After you've played *Monkey Island 2: LeChuck's Revenge* several times, you may want to use this function to skip over scenes you have seen before.

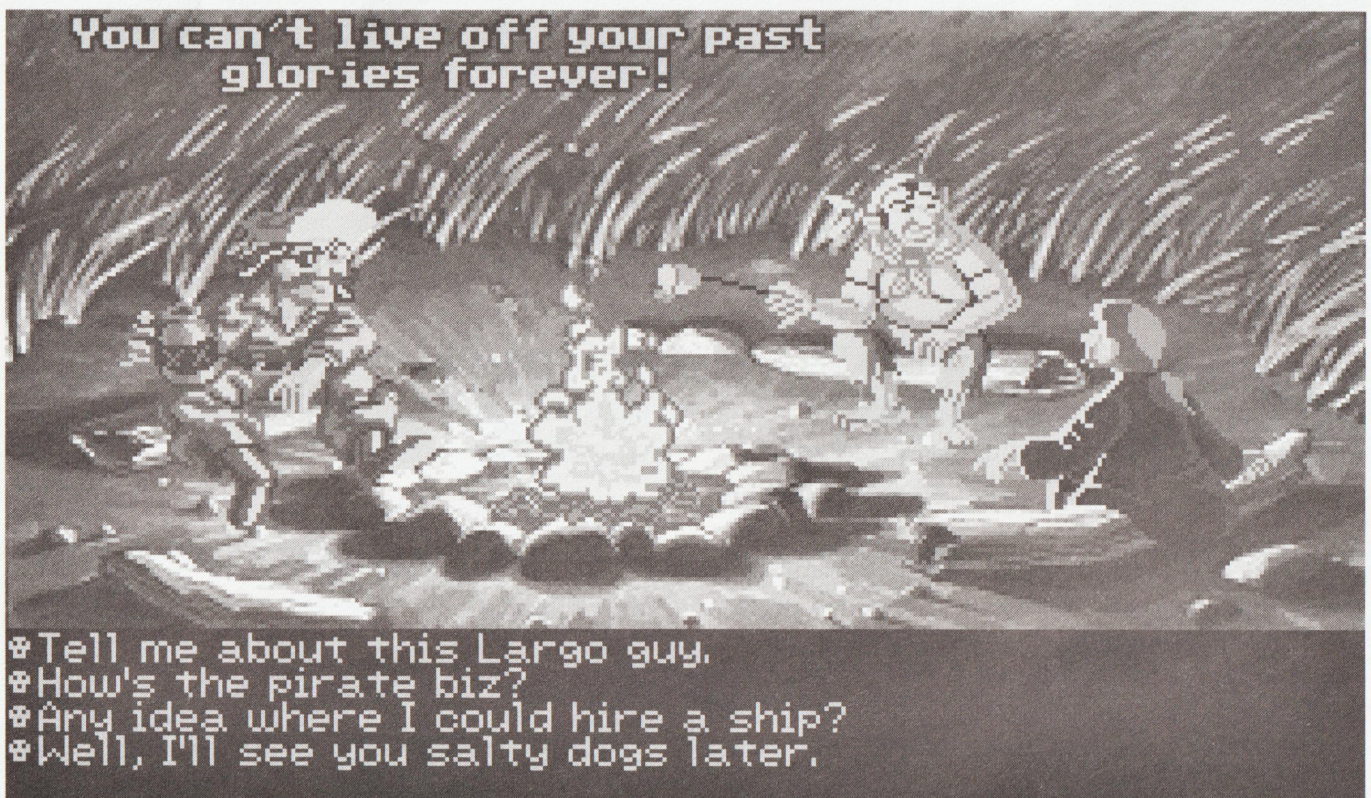
To restart the game from the beginning, press the key indicated on your reference card (F8 on most computers).

To pause the game, press the SPACE BAR. Press it again to resume play.

To adjust the speed of the Message Line to suit your reading speed, press the keys indicated on your reference card (+ and - on most computers). When you've finished reading a line of dialogue, you can press the Done key (the period — . — on most computers) to clear the line and proceed.

Use the keys indicated on your reference card to adjust the sound volume (hard brackets — [and] — on most computers). If you are using the internal speaker, these controls will turn the sound off and on. If your sound card has a volume control, make sure it is set higher than level zero before using the keyboard controls to fine-tune the volume level.

To quit the game, press the key combination indicated on your reference card (Control-C on most computers). If you plan to return to the game you're presently playing, remember to save game before quitting.





OUR GAME DESIGN PHILOSOPHY

We believe that you buy games to be entertained, not to be whacked over the head every time you make a mistake. So we don't bring the game to a screeching halt when you poke your nose into a place you haven't visited before. We try to make it clear, however, when you are in a dangerous situation.

We think you'd prefer to solve the game's mysteries by exploring and discovering, not by dying a thousand deaths. We also think you like to spend your time involved in the story, not typing in synonyms until you stumble upon the computer's word for a certain object.

Unlike conventional computer adventures, you won't find yourself accidentally stepping off a path, or dying because you've picked up a sharp object. There are a few dangerous situations which will bring the game to a premature end, but to anticipate them takes just a little common sense, not excessive paranoia. Save the game when you think you may be entering a dangerous area, but don't assume that every wrong step will result in death. Usually you'll get another chance.



A FEW HELPFUL HINTS

☞ Pick up everything you can. Odds are, at some point all those strange things will serve some purpose.

☞ If you get stuck and can't figure out how to proceed, try looking through all the items you've found and thinking about how each one might be used (perhaps with yet another item in your inventory). Think about

the places you've gone, and the people you've met. Chances are, there will be a connection that'll put you back on track.

☞ There is more than one way to solve many of the puzzles.

☞ If you want to speed up game play, you can order a hint book from Lucasfilm Games. In the United States: 1-800-STAR-WARS (1-800-782-7927). In Canada: 1-800-828-7927.

☞ If you want to access our automated hint line, call 1-900-740-JEDI (1-900-740-5334) in the United States only. The cost is 75¢ per minute. If you're under 18, first get your parent's or guardian's permission.

☞ If you need technical assistance, call 1-415-721-3333. We're sorry, but no hints can be given on this line.





Notice: Lucasfilm Games (a division of LucasArts Entertainment Company) reserves the right to make improvements in the product described in this manual at any time and without notice.

The enclosed software product and this manual are copyrighted and all rights are reserved by Lucasfilm Games. No part of this manual or any of the accompanying materials may be copied, reproduced, or translated in any form or medium without the prior written consent of Lucasfilm Games.

Lucasfilm Games warrants to the original consumer purchaser that the diskettes furnished in this product will be free from defects in materials and workmanship under normal use for a period of ninety (90) days from the date of purchase (as evidenced by your receipt). If any diskettes supplied as part of this product prove to be defective, and provided that the consumer purchaser returns the media to Lucasfilm Games in accordance with the instructions in the following paragraph, Lucasfilm Games will replace any defective diskette: (a) free of charge to the consumer purchaser, if the diskette proves to be defective within the ninety (90) day period following the date of purchase, and (b) if the diskette proves to be defective after the expiration of the ninety (90) day warranty period, Lucasfilm Games will replace the defective media for a fee of \$7.50 per diskette.

To obtain a replacement diskette, please return the diskette only, postage prepaid, to Lucasfilm Games, at the address below, accompanied by proof of date of purchase, a statement of the defect, and your name and return address. To replace defective media after expiration of the warranty period, send the diskette only, postage prepaid, to Lucasfilm Games at the below address, enclosing proof of purchase, a statement of the defect, your name and return address, and a check for \$7.50 per diskette. Lucasfilm Games will mail a replacement to you.

THE SOFTWARE, DISKETTES, AND DOCUMENTATION ARE PROVIDED "AS IS." THERE IS NO WARRANTY OF MERCHANTABILITY, NO WARRANTY OF FITNESS FOR A PARTICULAR USE, AND NO OTHER WARRANTY OF ANY KIND,

EITHER EXPRESSED OR IMPLIED REGARDING THE SOFTWARE, DISKETTES, OR DOCUMENTATION, EXCEPT AS EXPRESSLY PROVIDED IN THE PRECEDING PARAGRAPH. ACCORDINGLY, THE ENTIRE RISK AS TO THE USE, RESULTS AND PERFORMANCE OF THE SOFTWARE, DISKETTES AND DOCUMENTATION IS ASSUMED BY YOU. IN NO EVENT WILL LUCASFILM GAMES BE LIABLE TO YOU OR ANYONE ELSE FOR ANY CONSEQUENTIAL, SPECIAL, OR INDIRECT DAMAGES RESULTING FROM POSSESSION, USE, OR MALFUNCTION OF THIS PRODUCT, INCLUDING WITHOUT LIMITATION, DAMAGE TO PROPERTY AND, TO THE EXTENT PERMITTED BY LAW, DAMAGES FOR PERSONAL INJURY, EVEN IF LUCASFILM GAMES HAS BEEN ADVISED OF THE POSSIBILITY OF ANY SUCH DAMAGES OR LOSS. SOME STATES DO NOT ALLOW LIMITATIONS ON THE DURATION OF IMPLIED WARRANTIES AND/OR THE EXCLUSION OR LIMITATION OF INCIDENTAL OR CONSEQUENTIAL DAMAGES, AND THUS THE PRECEDING LIMITATION AND/OR EXCLUSIONS AND LIMITATIONS MAY NOT APPLY TO YOU. THIS WARRANTY GIVES YOU SPECIFIC LEGAL RIGHTS, AND YOU MAY HAVE OTHER RIGHTS DEPENDING ON THE LAWS IN YOUR STATE. YOU AGREE THAT THE LIABILITY OF LUCASFILM GAMES ARISING OUT OF ANY KIND OF LEGAL CLAIM (WHETHER IN CONTRACT, TORT, OR OTHERWISE) WILL NOT EXCEED THE AMOUNT YOU ORIGINALLY PAID FOR THE USE OF THIS PRODUCT.

Monkey Island 2: LeChuck's Revenge, character names, all other elements of the game fantasy, *iMUSE* and Lucasfilm Games are trademarks of LucasArts Entertainment Company. TM & © 1991 LucasArts Entertainment Company. *iMUSE* patent pending. All rights reserved.

Lucasfilm Games, P.O. Box 10307,
San Rafael, CA 94912.

615402